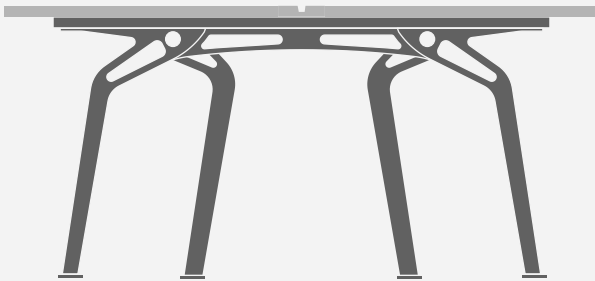


**Fluid™**

Workpoint System.

A solution for work environments by **ThinkingWorks™**



# Think Fluid.

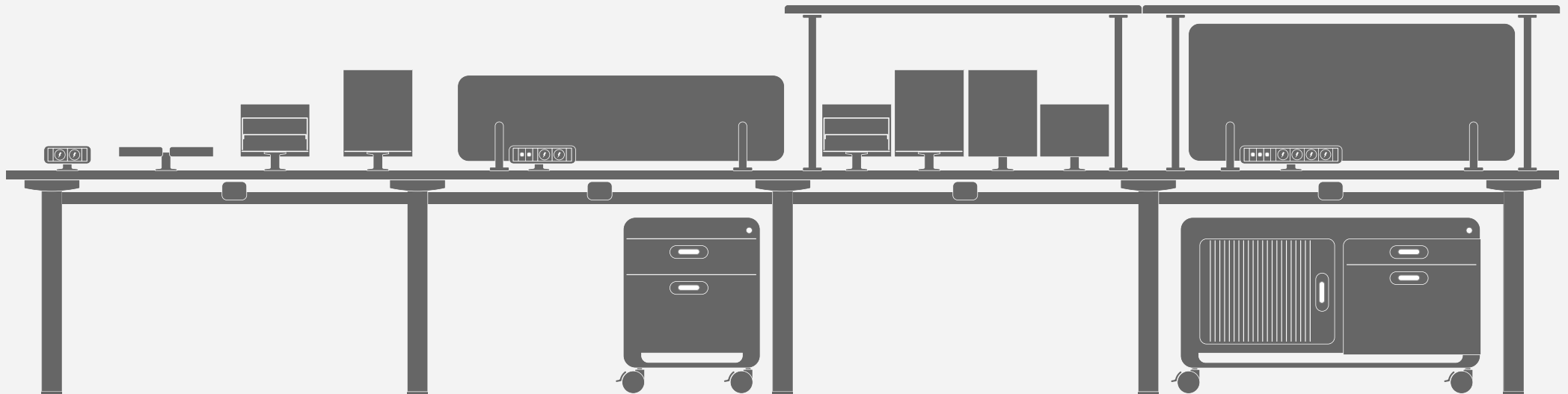
Fluid is a workpoint system by Thinking Works. Fluid has a bold aesthetic and unique leg profile, making it stand out from traditional bench-style workpoints. A central accessory rail provides fluidity for the system with the creation of individual configurations to suit each person's working style.





# A Fluid range.

At the heart of Fluid is a central accessory rail that provides a simple and intuitive platform into which various accessories can be fixed to support the individuals storage, computer monitor, or power + data needs.



Fluid is ideally configured in bench style arrangements, the standard accessory rail lengths help define multiple workpoints being placed together in a single or double sided arrangement. Additional screens, personal shelving and storage

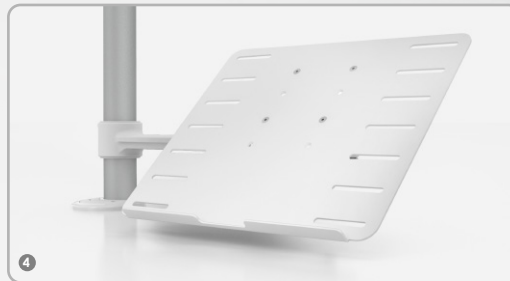
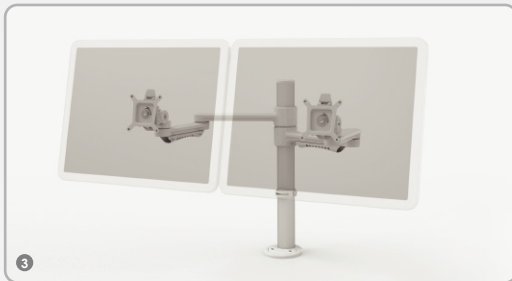
units are attached quickly and securely to the central rail to define the individual users workspace. Fluid is an ideal product for fixed workpoints and collaborative work place environments as well as touchdown and drop in spaces.

Accessories can be attached to the central rail with a simple drop in fixing bracket. Accessories range include: document trays, file pods and storage boxes, power and data outlets and both central and interpersonal screens.

Screens are offered in three finishes, frosted acrylic, compressed PET and upholstered to client specification. Screens are pinnable and offered in two different heights.

# Fluid functionality.

Fluid can be configured as a double sided workpoint, single sided workpoint and as stand alone desks. Fluid can also be configured as a table to maintain consistency throughout the workplace and can support top finishes to suit the design specification.



Casino is a complimentary storage system to Fluid, with mobile pedestal and caddy options. Topped with convenient seat cushions made from environmentally friendly porous expanded poly-propylene casino can be used as temporary seating.

With the addition of a C.ME Monitor Arm, which is also attachable to the central accessory rail, the workpoint can accommodate monitor and laptop trays as required.



# Aesthetic continuity.

Fluid has a bold aesthetic and unique leg design, making it stand out from traditional bench-style workpoints. Fluid has been engineered to be an exceptionally robust structure and designed to suit both desking and tables, from small meeting tables right through to the boardroom table.



**Benching  
Workpoint.**



**Single Sided  
Workpoint.**

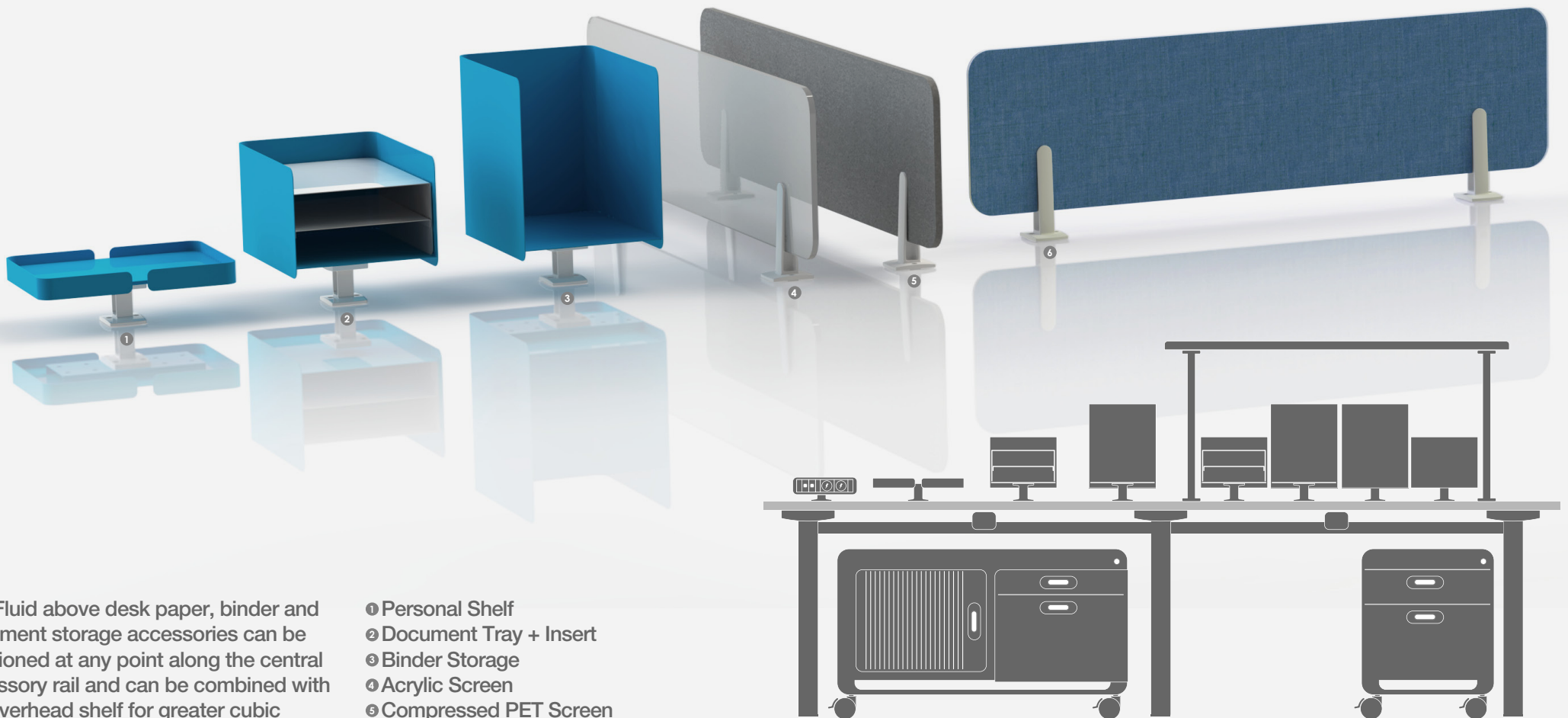


**Meeting  
Table.**



**Bench Style  
Meeting Table.**

## 3 dimensional storage + flexibility.

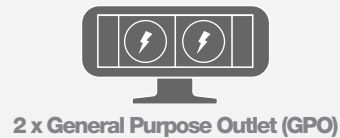


The Fluid above desk paper, binder and document storage accessories can be positioned at any point along the central accessory rail and can be combined with the overhead shelf for greater cubic storage per workstation.

- ❶ Personal Shelf
- ❷ Document Tray + Insert
- ❸ Binder Storage
- ❹ Acrylic Screen
- ❺ Compressed PET Screen
- ❻ Upholstered Screen (pinnable)

# Fluid power + data.

An increasing number of portable devices with varying power + data needs are becoming essential tools within the workplace. Fluids above desk power and data range is flexible enough to respond to the individuals needs and offers instant plug and play.



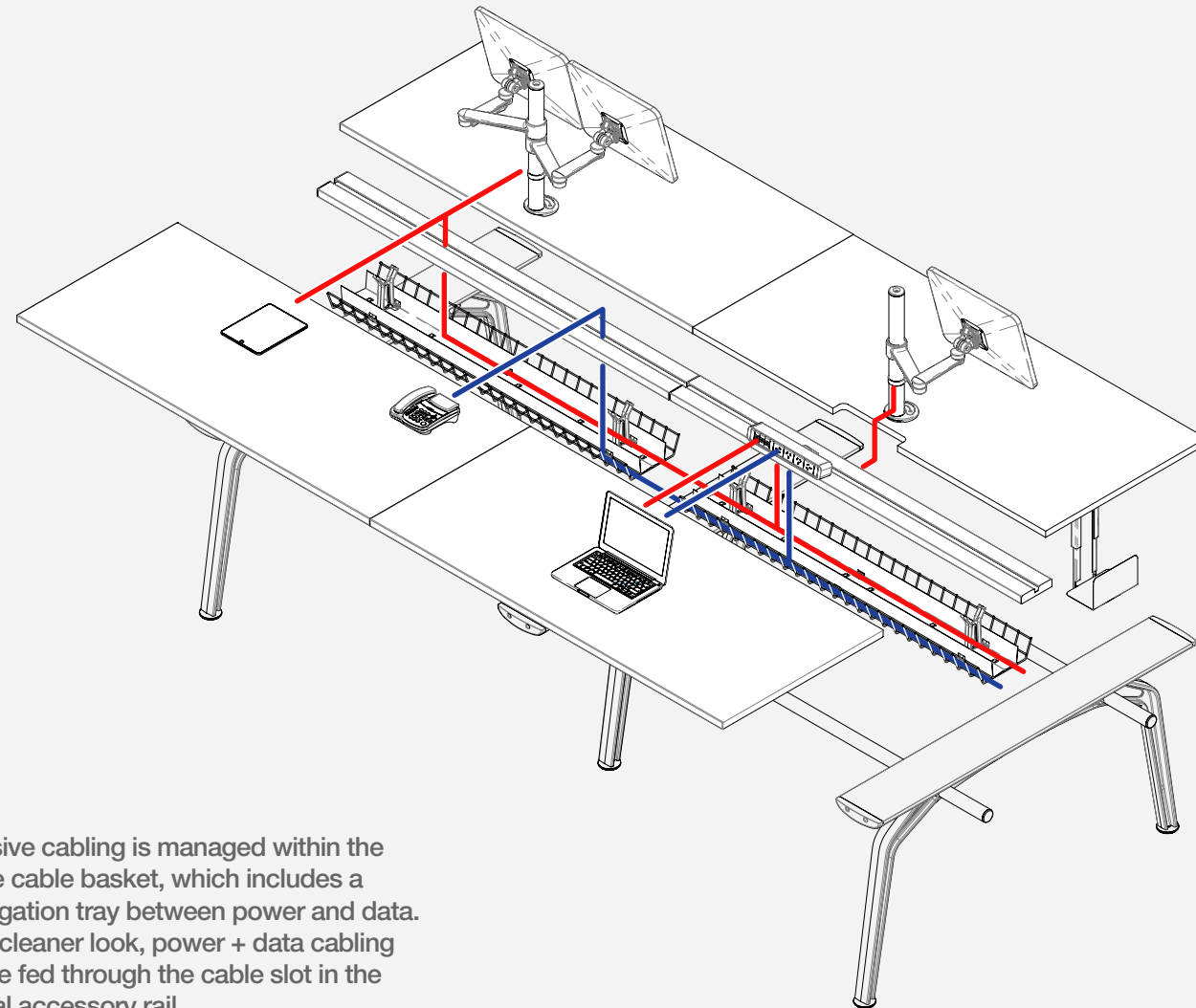
2 x General Purpose Outlet (GPO)



2 x GPO + 2 x Data



4 x GPO + 3 x Data



## Power options.



Australia / NZ



UK / Singapore / HK



China

The Fluid above desk power and data modules are ideal when users need to plug in and out quickly and easily. The power and data outlets are neatly attached to the accessories rail with the user friendly clamping brackets.

Excessive cabling is managed within the ample cable basket, which includes a segregation tray between power and data. For a cleaner look, power + data cabling can be fed through the cable slot in the central accessory rail.

